



Kingfisher Lighting

Part of the LUCECO group of companies

Datasheet



NAVAR Urban Catenary

Specification Text

The NAVAR Urban Catenary shall be manufactured from high-pressure die-cast aluminium and powder coated with a RAL 7016 Anthracite Grey marine grade finish. Its power outputs shall range from 62W - 158W. The luminaire shall deliver up to 137.0lm/W with luminaire lumen outputs ranging from 7,940 - 18,501. The NAVAR Urban Catenary shall have a range of different optics to suit open areas and streets as well as a fully programmable DALI driver. Available in 2700K or 4000K, the luminaire shall be IK10 and IP66 rated with 3-hour integral emergency back-up options available.

Specification

Weight:	14.5 kg
Windage:	0.06 m ²
Material:	Die-cast Aluminium
Paint Finish:	RAL7016 Anthracite Grey
Embodied Carbon:	270kg CO ₂ e

Product Description

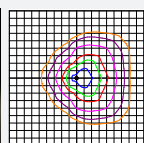
Perfect for cities and spaces requiring minimal street furniture, the NAVAR Urban hosts a sleek aesthetic which pairs perfectly with catenary mounting for a powerful performance.



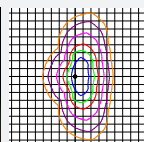
Key Features

- 62.0W - 158.0W
- 7,940 - 18,501 Luminaire Lumens
- Efficacy up to 137.0 lm/W
- 2700K, 4000K, CRI>70
- IP66 & IK10
- Lifetime 100,000, L80
- Fully Programmable DALI Driver
- Marine Grade Finish

Optics



Forward Throw Optic 70°
Open areas perimeter lighting



Street Optic 70°
Roadways, pathways and narrow areas

IP66	IK10	Colour Temperature	100,000 hrs LIFETIME	5 YEARS WARRANTY	
Marine Grade Finish	2700K	4000K			

Circular Economy Score	
0 to 0.05	Very poor circular economy performance
0.5 to 1.5	Some circular economy functionality
1.5 to 2.5	Definite/substantial progress to circularity
2.5 to 4.0	Excellent circularity

Other Options Available

Contact for further details

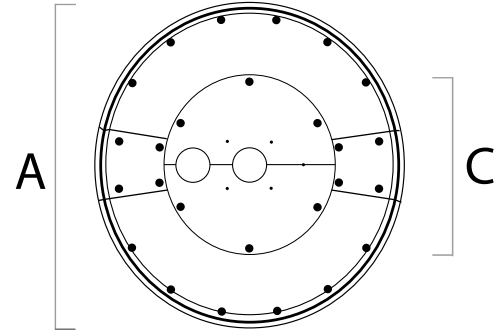
- Colour Temperature Options

Mounting Options

- Catenary Bracket, Ø10mm

Body Type	A	B	C
Standard	602	602	215

All measurements in mm



Code	Power	Luminaire Lumens	Drive Current	Inrush Current A pk	Optic	CCT(K)	IP	IK	Weight kg	Driver Included	Driver Type
NAVURB-CAT-FW70-60D	62.0	8,546	300	53.0	Asymmetric Forward Throw Optic 70°	4000	IP66	IK10	14.5	Yes	DALI
NAVURB-CAT-FW70-60D27K	62.0	7,951	300	53.0		2700	IP66	IK10	14.5	Yes	DALI
NAVURB-CAT-FW70-100D	97.0	12,890	475	53.0		4000	IP66	IK10	14.5	Yes	DALI
NAVURB-CAT-FW70-100D27K	97.0	11,864	475	53.0		2700	IP66	IK10	14.5	Yes	DALI
NAVURB-CAT-FW70-160D	158.0	18,414	750	53.0		4000	IP66	IK10	14.5	Yes	DALI
NAVURB-CAT-FW70-160D27K	158.0	17,078	750	53.0		2700	IP66	IK10	14.5	Yes	DALI
NAVURB-CAT-AY70-60D	62.0	8,658	300	53.0	Asymmetric Street Optic 70°	4000	IP66	IK10	14.5	Yes	DALI
NAVURB-CAT-AY70-60D27K	62.0	7,940	300	53.0		2700	IP66	IK10	14.5	Yes	DALI
NAVURB-CAT-AY70-100D	97.0	13,274	475	53.0		4000	IP66	IK10	14.5	Yes	DALI
NAVURB-CAT-AY70-100D27K	97.0	12,075	475	53.0		2700	IP66	IK10	14.5	Yes	DALI
NAVURB-CAT-AY70-160D	158.0	18,501	750	53.0		4000	IP66	IK10	14.5	Yes	DALI
NAVURB-CAT-AY70-160D27K	158.0	17,270	750	53.0		2700	IP66	IK10	14.5	Yes	DALI